

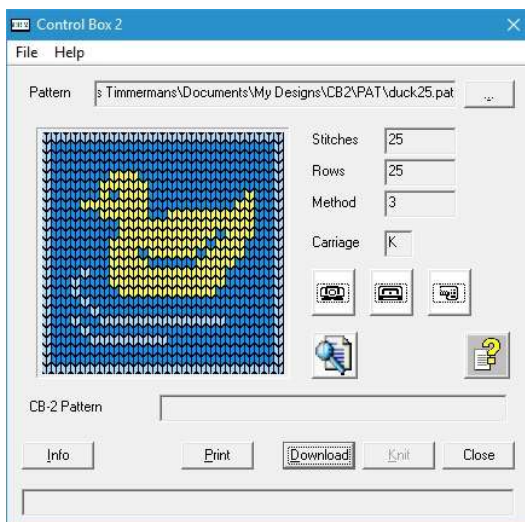
Control Box 2

Control Box 2, pattern programming and interactive knitting for Brother KH970 knitting machines.



Features

The Control Box 2 package allows you to knit almost any stitch pattern format on the KH970 electronic knitting machine. Control Box 2 can handle stitch patterns of 200 stitches wide by unlimited number of rows. The Control Box 2 unit connects directly to the bed of your KH970 knitting machine using the interface cord to transfer the information to the machine as you knit. You transfer your pattern to the Control Box 2 via the USB connection of your computer.

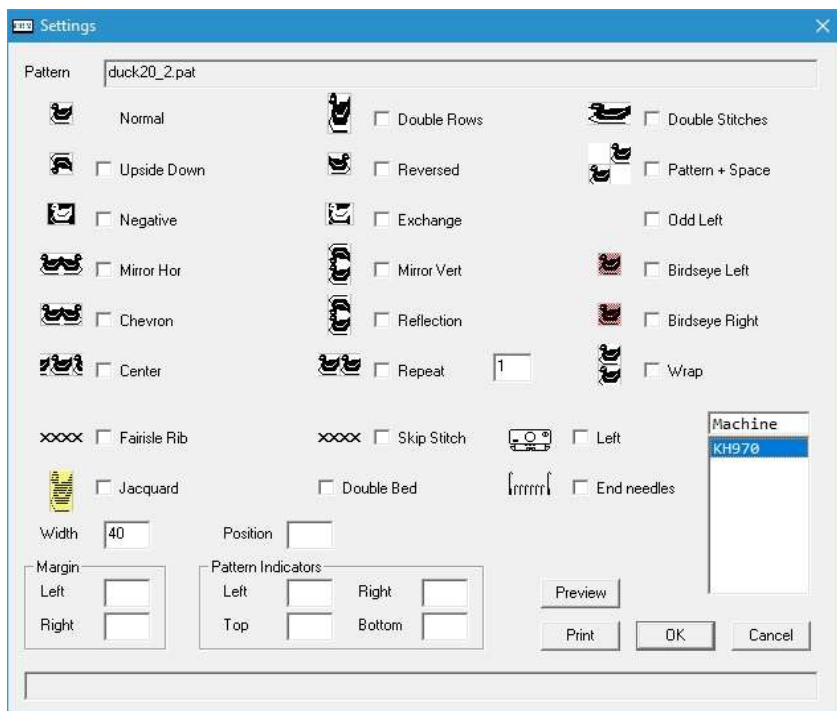


You can reverse, center, double length, double width and multiple other variations by selecting the option on the download screen. Designed for simplicity of use it makes electronic knitting easy.

The Control Box 2 puts creativity at your fingertips. You program your pattern on your computer with your favorite graphics program or obtain an existing pattern, download it to the Control Box 2 and you can knit your garments.

The inbuilt patterns of the KH970, KH965(i), KH950(i)/KH940/KH930, KH900 and KH270 are all inbuilt into Control Box 2.

DesignaKnit is supported via the DesignaKnit option. A Brotherlink 5 (USB) and magnet arm are no longer needed.



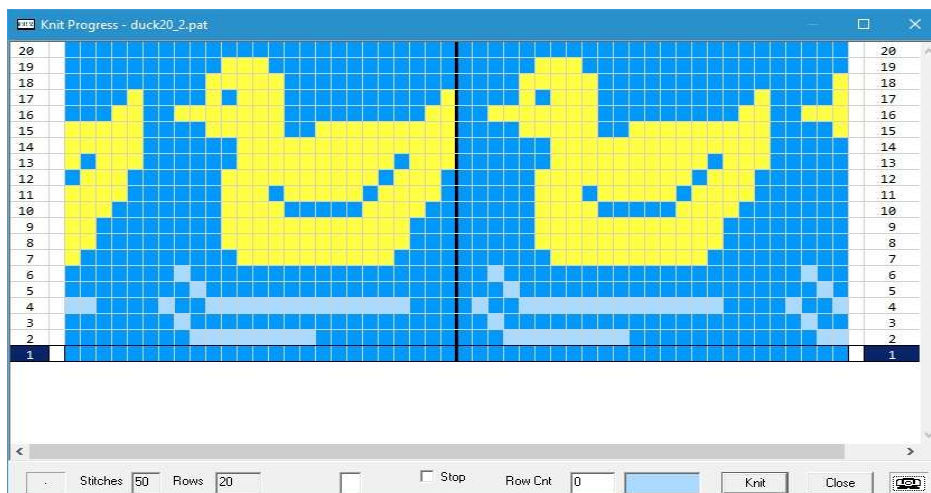
Stitch patterns are stored on your computer and can be recalled for knitting later.

Variations add versatility to a single design.

Just select the option on the download screen to alter the design. Single motif, center, upside down, negative, reversed, mirror, chevron, reflection, auto repeat, 2 and 3 color Jacquard in both skip stitch (with and without ribber) and fairisle rib, double length, double width, continuous knit, end needle selection and almost any combination of these.

Pattern indicators enable you to select the portion of the pattern you want to knit.

On screen display.



Your computer screen displays the stitches to be knitted and the progress of your knitting. You can select with a single click the row where you want to start knitting. The full screen of your computer can be used to display your pattern as it will be knitted. A row counter, carriage position and contrast color indication are displayed too.



The Control Box 2 software on your pc enables you to browse through your patterns. You can browse the inbuilt patterns and also patterns stored on (virtual) FB100 diskettes. Access to virtual diskettes using FB100 Emulator is substantially faster than Access to a physical FB100.

Read support is provides for diskettes written by KH970, KH965, KH950/KH940, KH930M, KH930, KH900 and KH270.

You can browse incremental with the arrow keys or browse by pattern number.

The browsing feature is also used to select the pattern you want to knit.

The Control Box 2 package has two models: with or without DesignaKnit option. The DesignaKnit option can be added later on.